

**HAVAL**



**Sazgar Engineering Works Limited**

Head Office: 88-Ali Town, Thokar Niaz Baig, Raiwind Road, Lahore, Pakistan.

UAN: 3444-SAZGAR (729-427) ☎ +92-42-35297863

✉ info@haval.pk | 🌐 haval.pk | 📱 HavalPakistan | 📍 havalpakistan

**3<sup>RD</sup> GEN HAVAL H6**

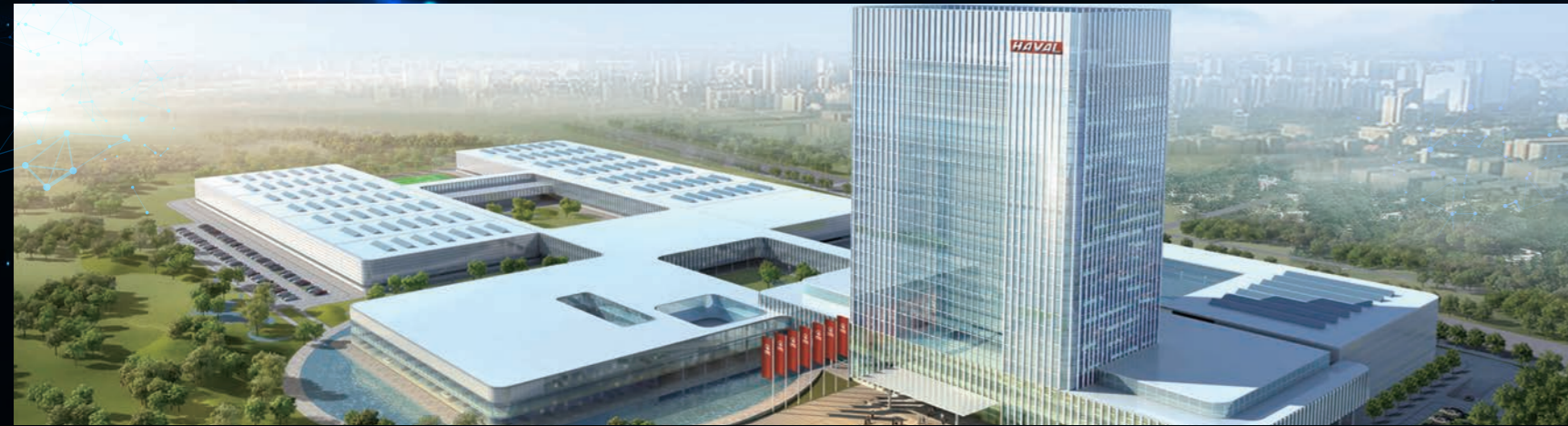


Built for the world, by the world.

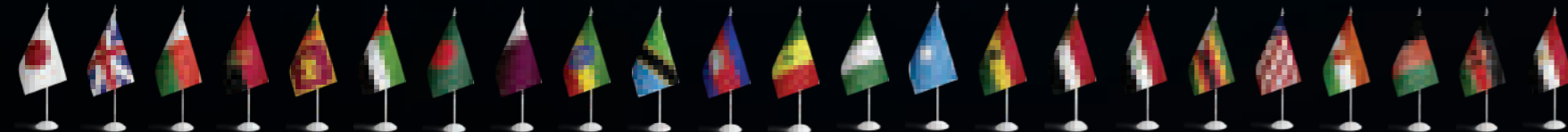
GWM is a world-renowned vehicle manufacturer and the parent company of Haval.

At GWM, everything we do is grounded in our corporate philosophy: 'improving little by little, every day.' From building world-class research and development systems, which enable continuous innovation, to following the 'excessive investment' principle, which drives industry leadership, we relentlessly put our philosophy into practice.

Haval is a global SUV specialist and part of the rapidly-growing GWM group. We are proud to make vehicles that combine the best components, technology and safety features from around the world. With over 7 million sales to date in more than 60 countries (and counting), we are the No.1 SUV brand in the world's largest market and have been for the past 12 years. We attribute our success to passion, drive and a commitment to listening to our customers.



SAZGAR was established in 1991 as a public limited company. It has more than 1000 employees. SAZGAR quickly became a household name in the automobile industry, with over 30 years of experience SAZGAR is proud to be the first electric 3-wheeler manufacturer in Pakistan and the only OEM from Pakistan to export its indigenous vehicles to 25+ countries including Japan.



## BRAND VALUE

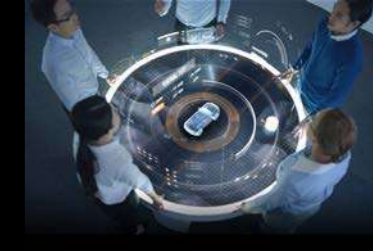
In March 2018, an international branding valuation institution released the Brand Finance Top 100 Most Valuable Auto Brands 2018. Haval brand surpassed the prestigious international brands such as Ferrari and Aston Martin rising to 16th place & becoming the most valuable Chinese car brand world over.



China's SUV Sales Crown for 12 Consecutive Years



The First Chinese SUV Brand with Sales Volume of 7 Million



Global Professional SUV Brand

## Haval TECHNOLOGY CENTER

Haval Technology Center covers an area of 250,000 m<sup>2</sup>, with a floor area of 260,000 m<sup>2</sup>. Haval has a R&D team of more than 7,000 people, including over 100 overseas technical experts, and 14 types of large-scale comprehensive laboratories such as environmental wind tunnel laboratory, high-altitude environment simulation laboratory, EMC laboratory and vehicle four-wheel drive NVH semi-anechoic laboratory.



**GWM** SPENDS \$1B

ON THE NEW HIGH INTELLIGENT MODULAR TECHNOLOGY **L.E.M.O.N PLATFORM**

High Performance, High Safety, High Ductility and Lightweight

▶ **L.E.M.O.N PLATFORM**

Haval H6 is built on Great Wall Motors' latest billion-dollar global platform which is called 'L.E.M.O.N' – for lightweight, electrification, multi-purpose, omni-protection and network. It is designed to meet the latest efficiency, power and safety standards. The H6 sits on a new modular (stretchable) architecture with INDEPENDENT SUSPENSION at each end, NEW ELECTRIC-ASSISTED STEERING, and a NEW OFF-THE-SHELF ESP SYSTEM. Haval also claims to have fitted seven "NVH ACOUSTIC PACKAGES" to cut road and wind noise, and to have produced the body from high-strength thermoformed steel with 2000 MPa of yield strength in parts.



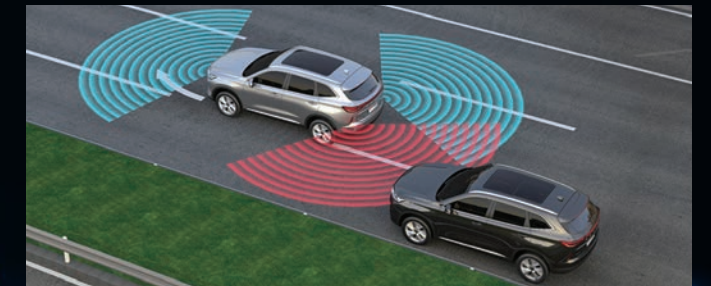


## INTELLIGENT MOBILITY

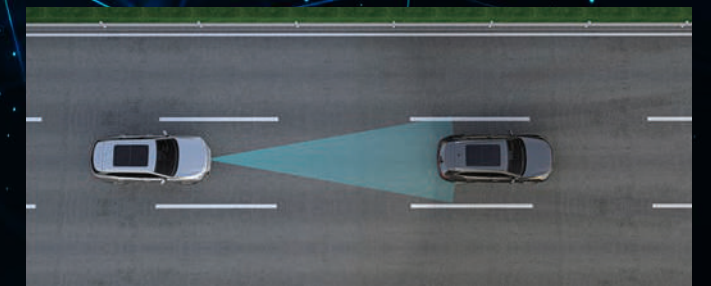
Intelligent safety functions covering 360-degrees of your new H6 make every drive easy and enjoyable.

## INTELLIGENT CAR ALL THE WAY FORWARD

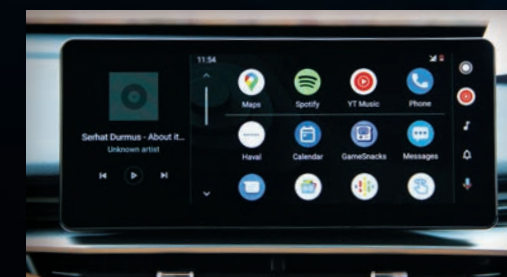
With intelligent equipment (carplay & android auto, wireless charging, w-HUD ), sensitive response and easy control, we stride all the way from "intelligence" to "wisdom".



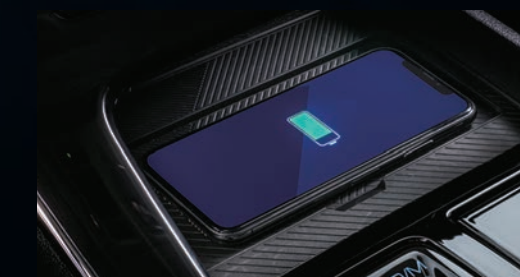
LKA(Lane-keeping Assistance)



ACC+ ICA (Intelligent Cruise Assistance) +TAJ (Traffic Jam Assistance)



Carplay & Android Auto



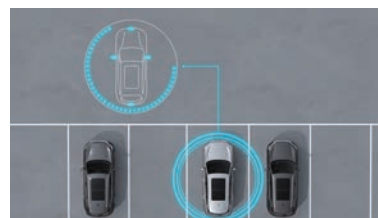
Fast Wireless Charging



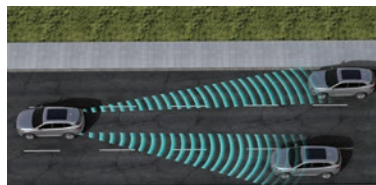
TSR(Traffic Signal Recognition)

## GLOBAL INTELLIGENT PROTECTION, FULL DIMENSIONAL SAFETY

Intelligent technology, active and passive safety protection, front monitor, and side caution provide safe driving, considerate service, and worry-free travel.



AVM (Around View Monitor System)



LCA + Astern side warning



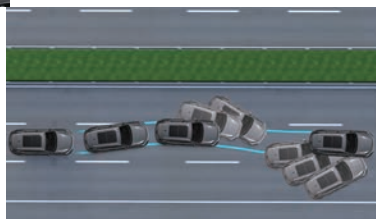
71.61% high-strength steel body



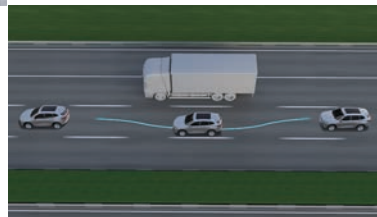
AEB



Full scene auto parking



ESP



Whole road section intelligent dodge



6 Omni-directional airbags

## HEAD UP DISPLAY

Spectacular transparent display on your windscreen. View everything you need to, while keeping your eyes on the road.







## WELCOME TO THE FUTURE

The minimalist interior creates a pleasant and surprising technology experience for you.



4 High Tone Speakers  
+ 4 Low Tone Speakers + DTS



10.25-inch virtual instrument



Front seats ventilation



12.3-inch ultra-smart touch screen



High gloss electroplating rotary shift



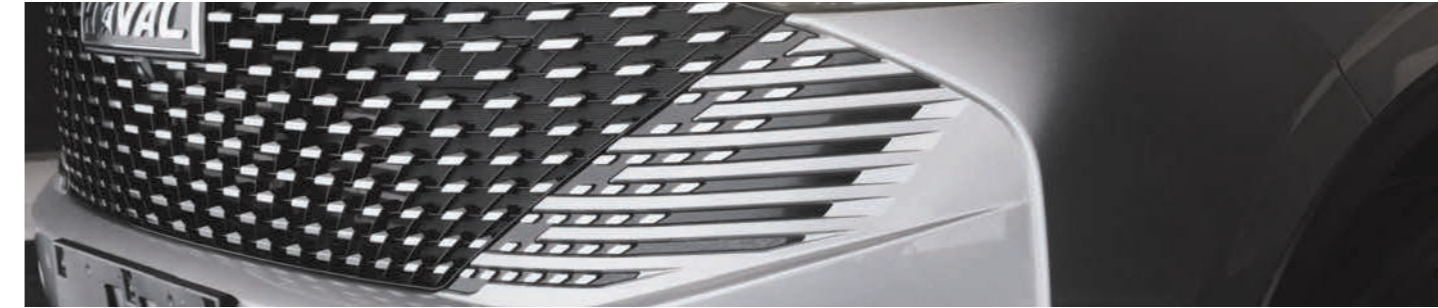
Panoramic Sunroof



Driver's seat with 8-direction electric adjustable + welcome functions



H6 HEV  
PAKISTAN'S FIRST





## ADVANCED POWER

The second generation 7DCT, reduced the throttle response time by 200ms, and improved the shift efficiency by 100ms.

**2.0GDIT ENGINE**, adopts Miller cycle, electronic water pump, 12:1 high compression ratio, and other advanced technologies. The thermal efficiency is up to 38%.



▶ 2.0GDIT Gasoline

▶ 7DCT

**1.5T ENGINE**, maximum power is 113kW, maximum torque is 233NM.

**4B15D HEV**, The engine maximum power is 113kW, maximum torque is 233NM and the motor maximum power is 130kW, maximum torque is 300NM to give you combined power of 179KW (240HP) and 530NM torque.



▶ 1.5T HEV Gasoline

▶ DHT



**Intelligent AWD System**, can realize transient response and torque distribution between systems within 110ms, realize 1200NM load distribution and transmission capacity, and make the torque ratio of front and rear axles up to 50/50.



▶ Front Macpherson rear multi-link independent suspension + AWD



## PAKISTAN DEALERSHIP NETWORK



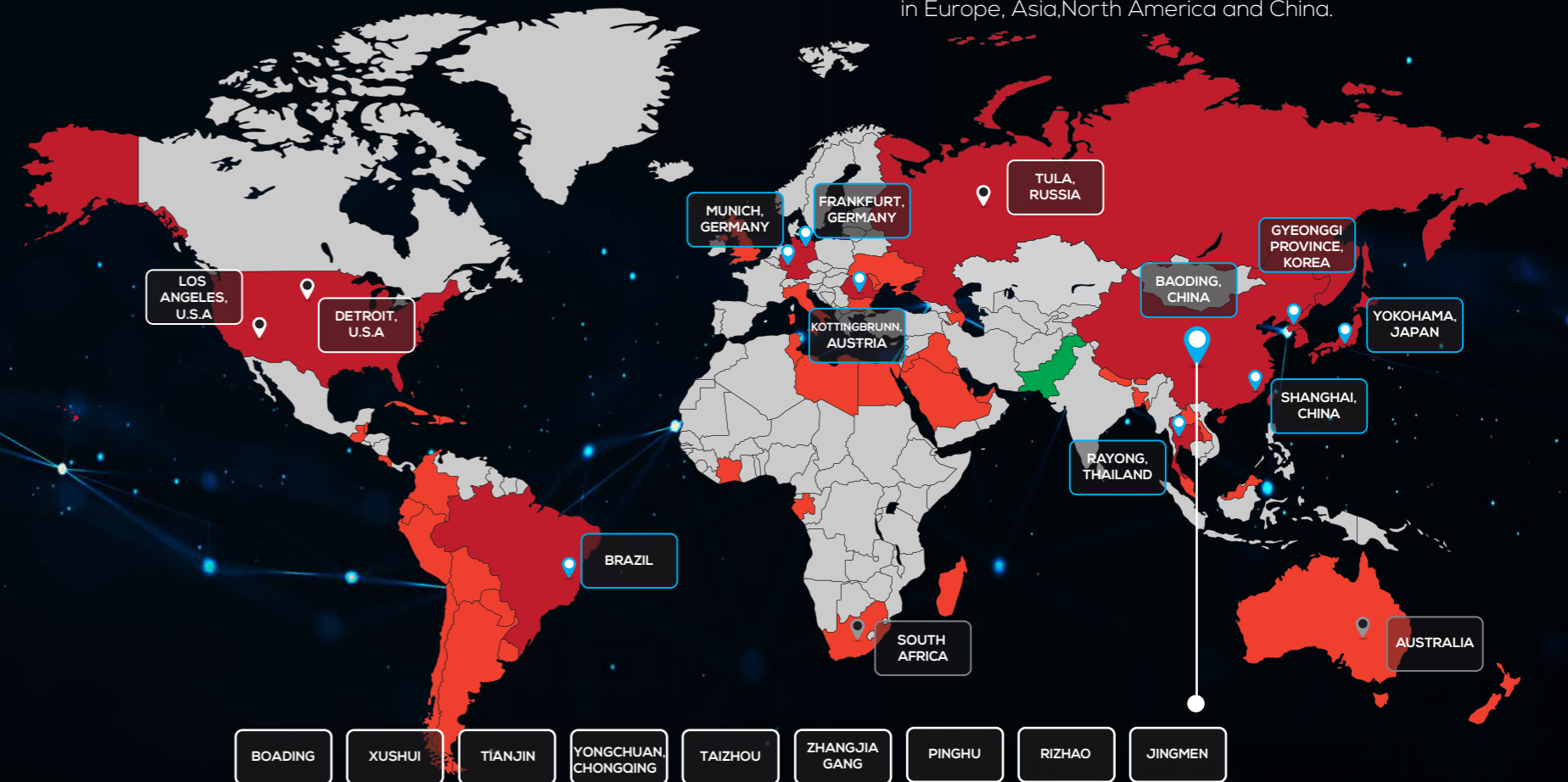
### DEALERSHIP CONTACT

City	Dealers Name	Contact No.
Lahore	Queens Motors	0323-8777778
Lahore	Hashmi and Hashmi Motors	0321-8462133
Lahore	Central Motors LLP	0300-0341444
Lahore	Haval Club	0308-4444125
Karachi	Automotive Technologies	0213-4188886
Islamabad	Haval Islamabad Motors	051-2802242
Rawalpindi	Haval Rawalpindi Motors	0333-6205064
Faisalabad	Sitara Lyallpur Motors	0321-8696766
Gujranwala	HB Gujranwala Motors	0311-1142825
Gujrat	Kaira Motors	0333-8403030
Multan	Southern Motors	0311-1446677
Sialkot	Haval Sialkot	0315-0204777



## GWM'S GLOBAL FOOTPRINT

Overseas sales cover more than **60** countries worldwide with R & D centers in Europe, Asia, North America and China.



GWM's goal is to go global

*GWM Group Chairman Jack Wey's Vision*

"As the founder of this company, I would be extremely disappointed and frustrated if the company ended up as a 'merely Chinese car company' when i retire."



## ▶ Body Color



1. G7 Red



2. Ayers Grey



3. Arctic White



4. Black Pearl

## ▶ Interior Color

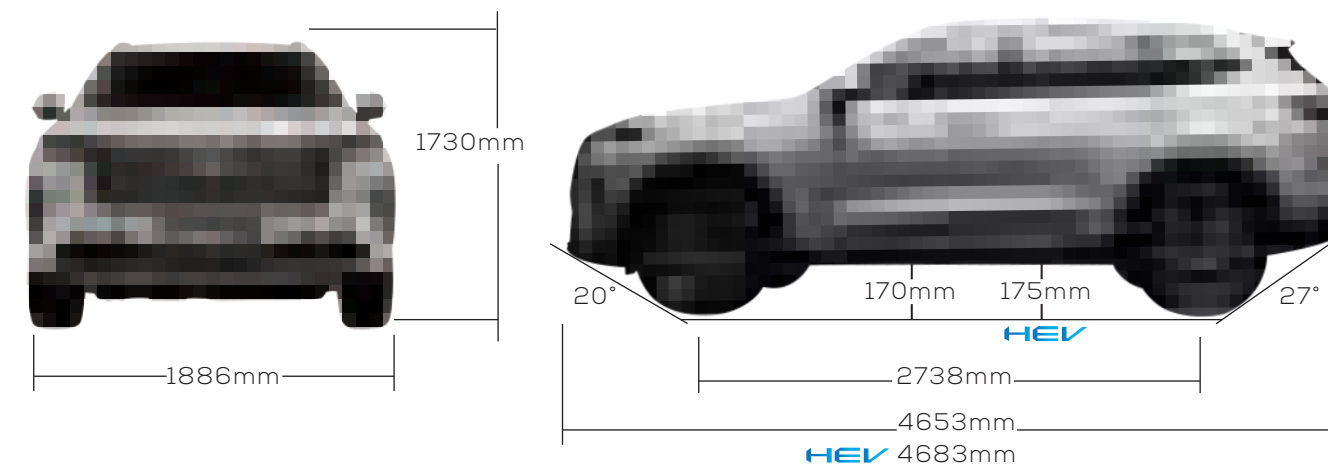


Burgundy Interior



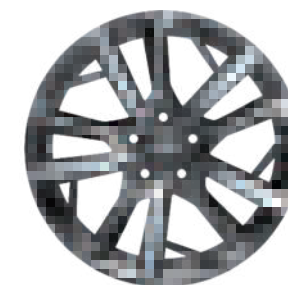
Black and Brown Interior

## ▶ Body Size

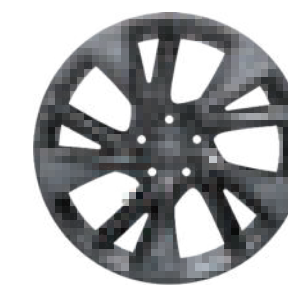


The minimum ground clearance, approach angle and departure angle are the quiescent values under technical conditions.

## ▶ Hub Types



18-inch astrolabe wheel hub



19-inch vortex wheel hub

# SPECIFICATIONS

DIMENSIONS - ENGINE - TRANSMISSION	1.5T	2.0T AWD	HEV
Engine	1.5 T	2.0 T	1.5T
Transmission	7 DCT	7 DCT	DHT
Driveline	FWD	AWD	FWD
Emission standard	Euro V	Euro V	Euro V
Power KW (HP)	113 ( 151 )	155 ( 208 )	179 ( 240 )
Torque	233 NM	325 NM	530 NM

CHASSIS & STEERING SYSTEM	1.5T	2.0T AWD	HEV
Front Macpherson rear multi-link independent suspension	•	•	•
Electric Shift	•	•	•
Electronic Parking Brake(EPB)	•	•	•
Auto Hold	•	•	•
Front Ventilated Disc Brakes+Rear Disc Brakes	•	•	•
Drive Mode - (Std/Sport/Eco/Snow)	•	•	•
Drive Mode - (Mode Choosable + Terrain Response System: Standard, economy, sports, snow, sand, off-road)	x	•	x
Auto Start-Stop	•	•	•
225/60 R18 Tyres	•	x	x
225/55 R19 Tyres	x	•	•

EXTERNAL EQUIPMENTS	1.5T	2.0T AWD	HEV
Electric Tailgate With Delayed Closing And Memory Function	•	•	•
Inductive Electric Tailgate	x	x	•
Front / Rear Boneless Wiper	•	•	•
Automatic Wiper	•	•	•
Panoramic Sunroof	•	•	•
Shark Fin Antenna	•	•	•

INTERNAL EQUIPMENTS	1.5T	2.0T AWD	HEV
Multi-Function Steering Wheel	•	•	•
Leather Steering Wheel	•	•	•
Steering Wheel with Paddle Shifter	•	•	x
4-Way Manually Adjustable Steering Wheel	•	•	•
Ordinary Threshold	•	x	x
Stainless Steel Threshold ( Only Front Door )	x	•	•
Sunvisor with Vanity Mirror and Light	•	•	•
Wireless Charge	•	•	•
Front 12V Power Outlet	•	•	•
Luggage Cabin 12V Power Outlet	x	•	•
Luggage Cover	•	•	•

ACTIVE / PASSIVE SAFETY	1.5T	2.0T AWD	HEV
6 Airbags: Dual SRS / Front Side / Side Curtain	•	•	•
Front + Rear Seatbelt Unfastening Warning System	•	•	•
Mechanical Child Proof Safety Lock	•	•	•
ESP(Electronic Stability Program)	•	•	•
TCS(Traction Control System)	•	•	•
SCM(Second Collision Mitigation)	•	•	•
CBC(Cornering Brake Control )	•	•	•
RMI(Roll Movement Intervention)	•	•	•
BA(Brake Assist)	•	•	•
HDC(Hill Descent Control)	•	•	•
HHC(Hill-Start Assist Control)	•	•	•
BOS (Brake Override System)	•	•	•
TPMS(Tyre Pressure Monitoring System)	•	•	•
USB Interface	x	•	•
Front Radar	• Two	• Four	• Six
Parking Aid System	•	•	•
MEB	•	•	•
360 View Camera	•	•	•
Full-Auto Parking	x	•	•
Autonomous-Reverse	x	•	•
ACC(Adaptive Cruise Control)+Go/Stop	•	•	•
Intelligent Turning	•	•	•
FCW (Forward Collision Warning) + AEB(Automatic Emergency Braking)	•	•	•
LDW (Lane Departure Warning)	•	•	•
LKA(Lane Keep Assist)	•	•	•
LCK(Lane Central Keeping)	•	•	•
TSR(Traffic Sign Recognition)	•	•	•
BSD (Blind Spot Detection) + LCA(Lane Change Assist )	x	•	•
Astern Side Warning + Astern Side Warning Braking	x	•	•
RCW( Rear Collision Warning )	x	•	•
DOW ( Door Opean Warning ) Collision Warning	x	•	•
TJA(Traffic Jam Assistance)	•	•	•
ICA (Intelligent Cruise Assistance)	•	•	•
Intelligent Dodge	x	•	•
ELK(Emergency Lane Keeping)	x	•	•
AEB-Crossroad-People-Bicycle	•	•	•
Driver Drowsiness Detection	•	•	•
EDR(Event Data Recorder)	•	•	•
Child Seat Fixing Device	•	•	•

OTHER EQUIPMENTS	1.5T	2.0T AWD	HEV
Warning Triangles	•	•	•

GLASS / REAR-VIEW MIRROR	1.5T	2.0T AWD	HEV
Green Glass	•	•	•
Electronic Internal Anti-glare Rear View Mirror	•	•	•
Full Power Windows With One Click Lifting And Anti-Pinch Function	•	•	•
Remote Control Window Closed	•	•	•
Heated Rear-view Mirror	•	•	•
Electrically Adjustable Rear-view Mirror	•	•	•
Electrically Foldable Rear-View Mirror	•	•	•
Auto Foldable Rear-view Mirror Locking	•	•	•
Rear-view Mirror With Down-corner Light	•	•	•
Rear Windshield with Defrosting Function	•	•	•

LIGHTS	1.5T	2.0T AWD	HEV
LED Headlamps + LED Tail-lamp	•	•	•
Electric Height-Ajustable Headlamps	•	•	•
Automatic Headlamps+Way-Home Lighting	•	•	•
Front Foglights: LED	•	•	•
Foglamps With Assist Lighting Function	•	•	•
Rear Foglights:LED	•	•	•
Daytime Running Lamps (LED)	•	•	•
Lights-On Warning System	•	•	•
Emergency Brake Alarm System	•	•	•
High Level Brake Lamp	•	•	•
LED Reading Light	•	•	•
Atmosphere Light-single Color	x	•	•

MEDIA	1.5T	2.0T AWD	HEV
10.25 Inch Colours Instruments	•	•	•
Radio: FM/AM	•	•	•
Bluetooth Hands-Free Calls System	•	•	•
10.25 Inch Touch Screen	•	x	x
12.3 Inch Touch Screen	x	•	•
Front Dual USB With Data Transfer Function	•	•	•
Rear Dual USB W/O Data Transfer Function	•	•	•
6 Speakers: 2 High Tone Speakers + 2 Low Tone Speakers + 2 Full Frequency Speaker + DTS	•	x	x
8 Speakers: 4 High Tone Speakers + 4 Low Tone Speakers + DTS	x	•	•
Carplay-Android Auto	•	•	•
W-HUD	x	•	•
Automatically Adjustable Volume In Accordance With Vehicle Speed	•	•	•

SEATS EQUIPMENTS	1.5T	2.0T AWD	HEV
Faux Leather Seat	•	•	•
6-Way Electric Adjustable / 2-WayWaist Supporter Driver Seat	•	•	•
4-Way Manual Adjustable Front Passenger Seat	•	x	x
4-Way Electric Adjustable Front Passenger Seat	x	•	•
Front Ventilated Seats	x	•	•
6:4 Separated Foldable Rear Seats	•	•	•

IMMOBILIZER	1.5T	2.0T AWD	HEV
Keyless Entry System	•	•	•
Button Type Push-To-Start System	•	•	•
Car Locating Function	•	•	•
Anti-theft Alarm System	•	•	•
Speed-sensing Central Door Lock	•	•	•
Automatic Crash Unlock Function	•	•	•
Door Anti-Error Locking Function	•	•	•

AIR CONDITIONING	1.5T	2.0T AWD	HEV
Dual-Zone Auto Ac	•	•	•
Second Row AC Outlet	•	•	•
AQS(Air Quality Management System)	•	•	•
Anion Air Purifier	x	•	•
Front Windshield Automatic Defog	•	•	•
Outside Temperature Indicator	•	•	•
CN95 Filter	•	•	•

SECURITY	1.5T	2.0T AWD	HEV
Keyless Entry System	•	•	•
Button Type Push-To-Start System	•	•	•
Car Locating Function	•	•	•
Anti-theft Alarm System	•	•	•
Speed-sensing Central Door Lock	•	•	•
Automatic Crash Unlock Function	•	•	•
Door Ajar Warning System	•	•	•

Remarks: "•"Standard "x"Not available. Features highlighted in red are additional in 2.0T AWD and HEV

This brochure is published by Sazgar Engineering Works Limited. All figures and presentations may be amended from time to time. We reserve the rights of final explanation. Due to product design or improvement, etc. We reserve the rights to amend the models and service specified herein, without giving further notice. The parameters and configurations shall be subject to the actual products.



For more detail: Please visit [www.haval.pk](http://www.haval.pk)