

Highlights.



Car of the Year 2015

Europe's 'Car of the Year' award is one of the most prestigious in the world, and voting is done by journalists from 22 countries. The Passat emerged as the winner by a clear margin.



Powerful TSI engines

Available in two power levels – 180 PS & 220 PS – the Passat's TSI engines deliver smooth, effortless performance in all driving conditions, combined with class-leading fuel economy.



LED headlamps

Compared to xenon headlamps, the Passat's LED headlamps are more efficient and generate illumination that is similar to daylight. The LED daytime running lights also have a distinctive signature.



LED tail lamps with light scenes

When braking, the horizontal light signature of the rear lamps switches to a vertically oriented brake light signature. This change makes the brake lights more perceptible and increases safety.



Dynamic Chassis Control (DCC)

With DCC, the Passat offers three driving modes, 'Comfort', 'Normal' and 'Sport'. Every millisecond, the car computes and adaptively adjusts the optimal damping force for every situation.



Touchscreen driver interface

Everything at your fingertips: the latest generation infotainment systems with high-resolution 6.5- or 8.0-inch displays feature quick processing and an extremely user-friendly interface.



MirrorLink connectivity

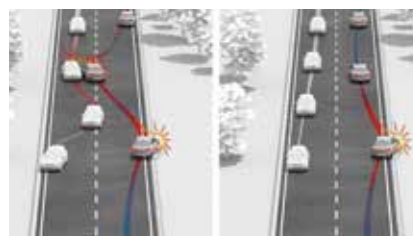
The MirrorLink system enables you to use and display selected apps from your Android smartphone on the Passat's touchscreen, so you can safely use them while driving.



ergoComfort seat

The ergoComfort seat is electrically adjustable in 14 ways so you can find your most suitable individual posture with ease. It has won several awards from official spinal health associations.

Safety.



Automatic post-collision braking system

This system automatically initiates braking after the car is involved in a collision. It prevents or minimises the severity of subsequent collisions, and allows the driver to steer the car to safety.



Fatigue detection system

Many accidents occur due to driver inattentiveness. The fatigue detection system constantly analyses the driver's behaviour and recommends taking a break when possible tiredness is detected.

Aftersales.

Here at Volkswagen, you can be assured of our service quality. We deliver as promised!



Express Friday.

Get standard 15,000 km and 30,000 km servicing done in under 3 hours.



Service Appointment Promise.

Our promise to you - a service confirmation date within 4 working days. Or you'll enjoy complimentary vehicle pick-up and delivery service.

Volkswagen Warranty

- 3 years or 100,000 km warranty (whichever is earlier)
- 24-hour Volkswagen Roadside Assistance
- 12-year body protection warranty
- 3-year paintwork warranty

Only available at Volkswagen Centre Singapore (Alexandra)

Volkswagen Centre Singapore (Alexandra)

247 Alexandra Road
Singapore 159934

Showroom tel +65 6474 8288

Volkswagen Exclusive

1 Kampong Ampat
Singapore 368314

Showroom tel +65 6922 3555

Services

Aftersales service hotline +65 6305 7299
Aftersales service fax +65 6474 3643
24-Hr Roadside Assistance +65 6333 8800

Service enquiry email

service@vw.com.sg

www.vw.com.sg

Subject to changes without notice.
Printed in Singapore.
Issue: July 2015



Scan to find out
more about Passat.



The new Passat.



Das Auto.

Technical data.

	Passat 1.8 TSI	Passat 2.0 TSI
Engine		
Engine type	4-cylinder, TSI petrol engine with 16 valves, turbocharger	4-cylinder, TSI petrol engine with 16 valves, turbocharger
Capacity L / cc	1.8 / 1,798	2.0 / 1,984
Power PS / rpm	180 / 5,100 - 6,200	220 / 4,500 - 6,200
Torque Nm / rpm	250 / 1,250 - 5,000	350 / 1,500 - 4,400
Emission category	Euro 6	Euro 6
Gearbox	7-speed dual clutch automatic gearbox (DSG)	6-speed dual clutch automatic gearbox (DSG)
Performance		
Top speed km/h	232	246
Acceleration 0-80 km/h	5.8 sec	5.2 sec
Acceleration 0-100 km/h	7.9 sec	6.7 sec
Driven wheels	Front	
Fuel Consumption		
Urban L/100km	7.3	8.0
Extra-urban L/100km	5.1	5.5
Combined cycle L/100km	5.9	6.4
CO ₂ emissions g/km	135	149
Fuel capacity L	66	
Exterior Dimensions		
Length / width / height mm	4,767 / 1,832 / 1,456	
Wheelbase mm	2,791	
Track front / rear mm	1,584 / 1,568	
Wheel size	7.0J x 17"	8.0J x 18"
Tyre size	215/55 R17	235/45 R18
Turning circle m	11.7	



Exterior colours.

Black Oak Brown Metallic	Deep Black Pearl	Harvard Blue Metallic	Indium Grey Metallic
Night Blue Metallic	Pure White	Tungsten Silver Metallic	Crimson Red Metallic
Oryx White Pearl	Uranus Grey		

Upholstery colours.

Titanium Black	St. Tropez	Natural Brown	Marrakesh

Volkswagen reserves the right to make changes to the design, specification, colour and information contained herein without notice.

Standard specification.

	Passat 1.8 TSI Comfortline	Passat 1.8 TSI Highline	Passat 2.0 TSI Exclusiveline	Passat 2.0 TSI R-Line
Exterior Equipment				
Alloy wheels 7.0J x 17", tyres 215/55 R17	●	●	–	–
Alloy wheels 8.0J x 18", tyres 235/45 R18	–	–	●	●
LED headlights with cornering lights, separate LED daytime running lights	●	●	●	●
Automatic headlight activation, with 'Leaving Home' and 'Coming Home' functions	●	●	●	●
LED tail lamps	●	●	●	●
'Easy Open' sensor-controlled tailgate opening and electric closing	–	–	●	–
Panoramic sunroof	–	●	●	●
Windshield, side and rear windows in heat-insulating glass	●	●	●	●
Electrically foldable, adjustable and heated exterior mirrors with auto-dimming on driver's side	●	●	●	●
Bumper and sill extensions in 'R' style	–	–	–	●
'R-Line' logo on radiator grille	–	–	–	●
Interior Equipment				
'Climatronic' air conditioning system with 3-zone temperature control	●	●	●	●
Seat and centre armrest surfaces in 'Nappa' leather	●	●	●	●
Electrically adjustable front seats	●	●	●	●
Active ventilating function with memory and massage function for driver seat	–	–	●	–
ergoComfort seat with memory and massage function for driver seat	●	●	–	●
Front centre armrest armrest with adjustable storage box	●	●	●	●
Asymmetrical split folding rear seat bench with centre armrest	●	●	●	●
Glove compartment with cooling function	●	●	●	●
Keyless Entry and Start-stop System (KESSY) including 'Press & Drive' starting function	●	●	●	●
Interior ambient lighting with LED entry lights for all doors	●	●	●	●
Leather-covered 3-spoke multi-function steering wheel	●	●	●	●
Steering wheel gearshift paddles	–	–	–	●
Height and reach adjustment for steering wheel	●	●	●	●
Leather gearshift knob	●	●	●	●
'Brushed Aluminium' inserts for dashboard and door trim panels	●	●	●	●
'Composition Media' radio with 6.5" touch screen display, CD player and SD memory card slot, 8 speakers	●	–	–	–
'Discover Pro' navigation system with 8" touch screen display, DVD player, 2 SD memory card slots and Bluetooth connectivity, 8 speakers	–	●	●	●
MirrorLink smartphone connectivity	–	●	●	●
'DYNAUDIO Confidence' exclusive sound system	–	–	●	–
AUX-IN multimedia socket	●	●	●	●
Multi-function colour display 'Premium'	●	●	●	●
LED interior footwell lighting	●	●	●	●
LED reading lights in front	●	●	●	●
Sun visors with illuminated vanity mirrors	●	●	●	●
Safety				
Airbags for driver and front passenger with front passenger airbag deactivation	●	●	●	●
Curtain airbag system for front and rear passengers including side airbags at the front	●	●	●	●
Electronic Stabilisation Programme (ESP)	●	●	●	●
Safety-optimised front headrests and 3 rear headrests	●	●	●	●
3-point seat belts for all occupants	●	●	●	●
'Rest Assist' fatigue detection system	●	●	●	●
4 disc brakes, ventilated in front	●	●	●	●
Anti-theft alarm system	●	●	●	●
Hill hold control	●	●	●	●
Cruise control system	●	●	●	●
Dynamic Chassis Control (DCC) with driving profile selection	–	–	●	●
Electromechanical speed-sensitive power steering	●	●	●	●
Rain sensor	●	●	●	●
'Park Assist' semi-automatic parking	–	–	●	–
Park Distance Control (PDC)	●	●	●	●
'Rear Assist' rear view camera	–	●	●	●
Automatic dimming interior mirror	●	●	●	●
Front and rear fog lights	●	●	●	●
Front seat belt reminder warning signal and light	●	●	●	●